

# GENERAL FIRE APPARATUS, INC.

MAIN WAREHOUSE | FABRICATION PLANT SERVICE CENTER | 4004 E. Trent Ave., Spokane, WA 99202  
 P: (509) 535-4255 | F: (509) 534-8529 | TF: 1-800-541-4218 | www.generalfire.com



## Six General X Body apparatus in service

Rear Mounted Pump Controls	Waterous PB 18 2515 Fire Pump	20 GPM @370 PSI / 100 GPM @100 PSI
18 Horsepower Briggs Vanguard Gas Engine	7 Gallon Wheel Well Mounted Remote Fuel	Remote Gas Tank Fuel Level Indicator
Auxiliary Gas Tank Electric Fuel Pump	Overboard Fire Pump Exhaust Primer	Akron HD Valves with TS Controls Handles
2" Tank to Pump 1" Tank Recirculation Valve	2 1/2" Gated Swivel Direct Tank Refill Valve	2 1/2" Gated Suction Inlet Valve
Two 1 1/2" Rear Preconnected Discharges	Two Electric Booster Reels 150' x 3/4" Hose	One Back Pack Fill Hose Connect
Two 1" TFT Bubble Cup Reel Nozzles	Hypro/Foam Pro 1600 Injection Foam System	12 Gallon Poly Foam Cell
500 Gallon Stainless Steel Booster Tank	Stainless Steel Side Body Compartments	Double Panned Aluminum Hinged Doors
Cast Product Diesel & Gas Fuel Guards	1" Stainless Steel Lower Body Rub Rails	Three Lower Body Side Compartments
One Full Height Body Right Side Compartment	Two Upper Body Side Compartments	Spatter Painted Compartment Interiors
Automatic Door Open Compartment Lighting	Single Slam Latch Side Compartment Doors	Upper Center Dunnage Compartment
Upper Left Side Adjustable Shelf	Full Width Rear Step Bumper	Two Rear Preconnect Storage Bins
One Rear Backboard Storage Compartment	Under Body Rear Suction Hose Storage	Enclosed Soft Suction Hose Compartment
2" Square Tubing Front Headache Rack	Stainless Grab Railing Rear Center Access	Whelen LED DOT Lighting
Open Door Indicator Light In Cab	Code 3 Emergency Lighting	Able II LED Side Intersection Lighting
Code 3 Electronic Siren & Light Controls	Apparatus 12 Volt Scene Lighting	Headlight Wig Wags
12 Volt Telescoping Scene Light	120 Shoreline Power With Auto Ejector	Double Reflective Body & Cab Stripping
12k Rear Trailer Hitch & Cab Controlled Brakes	Under Body Mounted Apparatus Wheel Chocks	Ford F-550 Diesel/Automatic Chassis

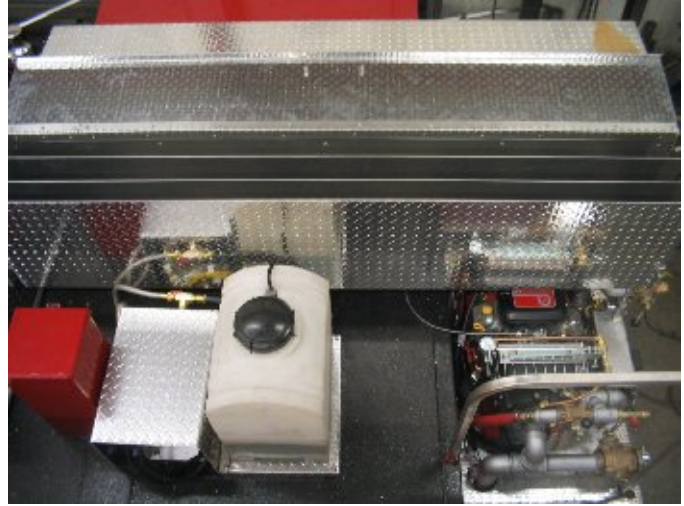
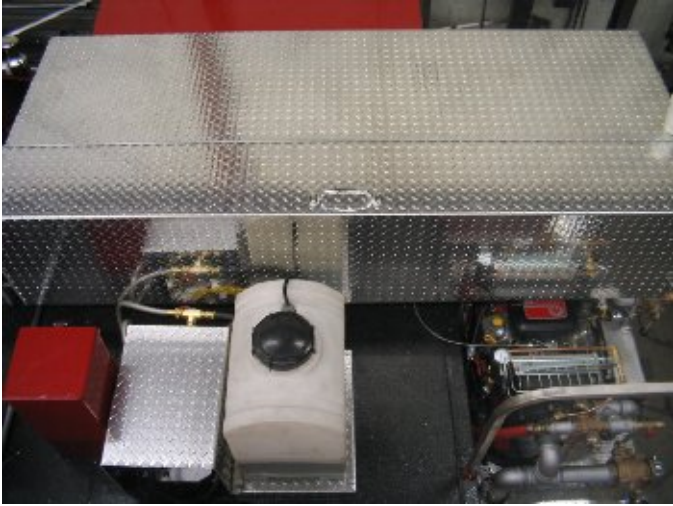
**Easy street access to upper body compartments and main fire pump control panel**



**Slide out storage trays in lower rear compartment**



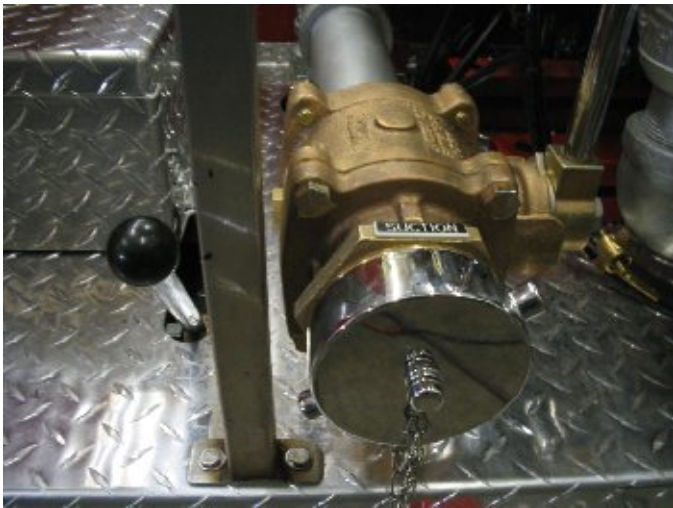
**Easy access to load the rear preconnect hose storage bins**



**Preconnected & Dry lay storage to the rear of the apparatus**



**Akron gated discharges and suction inlets**



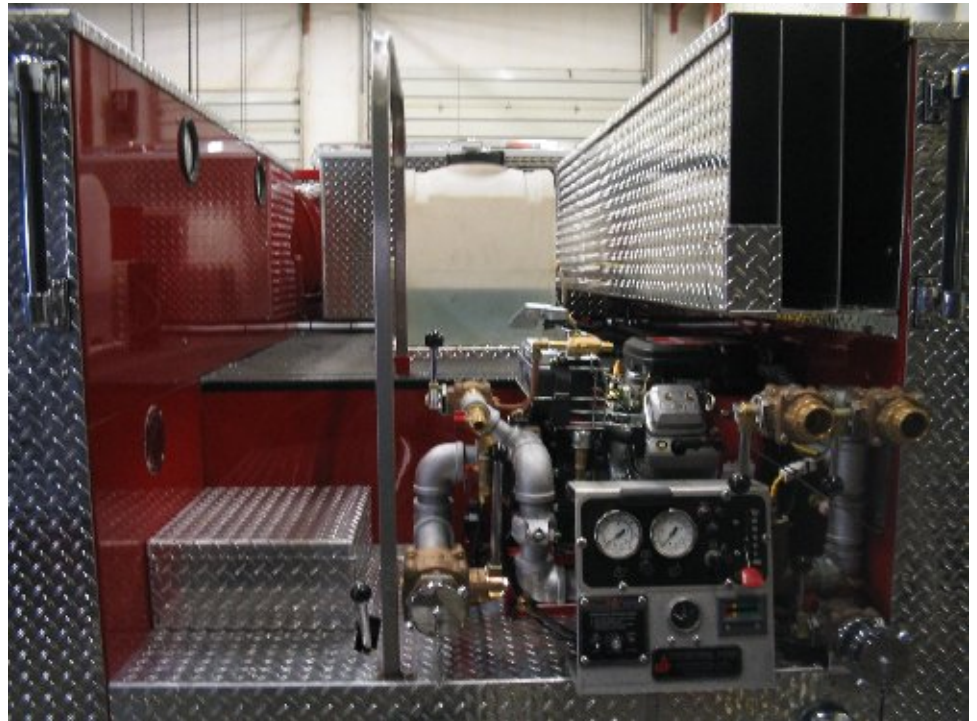
**Under body enclosed Lightweight suction hose storage**





**Lighted Fire pump control panel includes pump gauges, throttle, ignition indicator, foam controls, water level indicator**

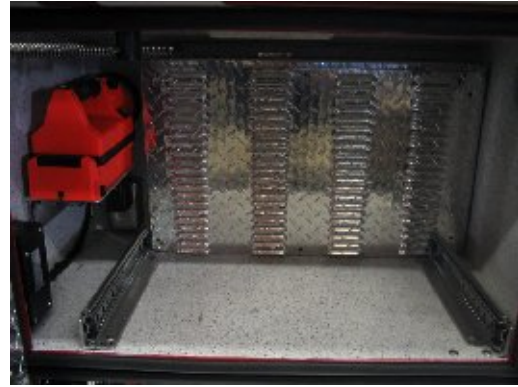
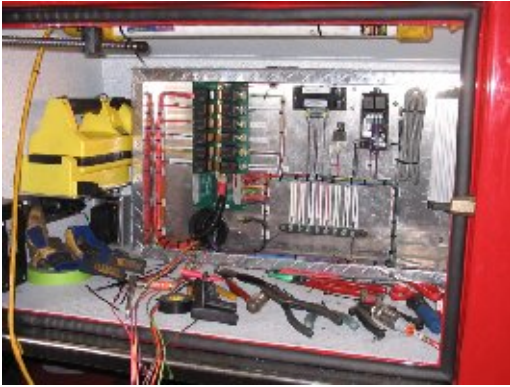
**Rear view of upper deck level and street controls for discharges**



**Upper tool storage compartment**



**Apparatus body electrical distribution center, color coded and as built wiring**



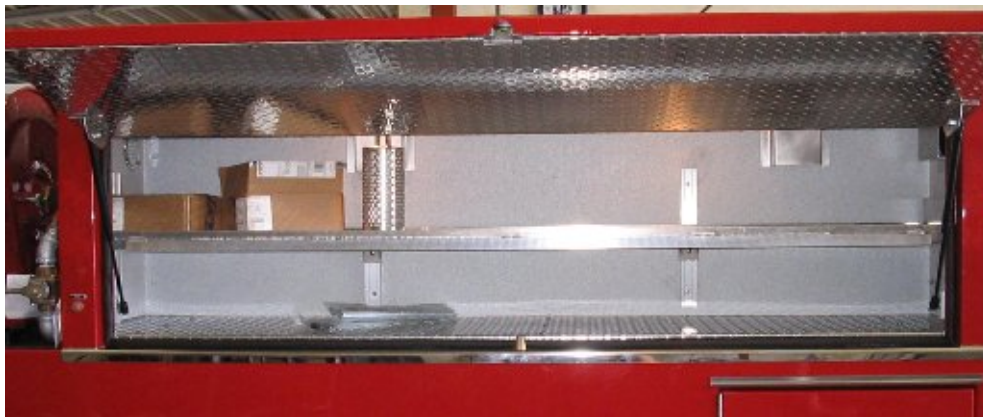
**Body Power Distribution board**



**Door ajar wiring color coded and label**



**Adjustable Unistrut shelving**



**Passenger side compartment lay-out**



**Drivers side compartment view and booster reel position**



**Telescoping D/C work light & electric booster reel with rollers and guides**

